

Referral Criteria

BLUE

Confirmed diagnosis of ASC or LD and:

In a Tier 4 Mental Health Hospital

RED

Confirmed diagnosis of ASC or LD and:

At immediate risk (within 48 hours) of admission to a mental health hospital or 52 week specialist or unregulated placement.

AMBER

Confirmed diagnosis of ASC or LD and:

Discharge from a Tier 4 mental health hospital

At imminent risk (within 2 weeks) of admission to a Tier 4 mental health hospital or 52 week specialist or unregulated placement.

Breakdown in home placement that may lead to an inappropriate admission to a Tier 4 mental health hospital or 52 week specialist or unregulated placement.

GREEN

Confirmed diagnosis of LD or ASC and:

At risk of home placement breakdown alongside a significant escalation in need and support from statutory services (health, education and social care).

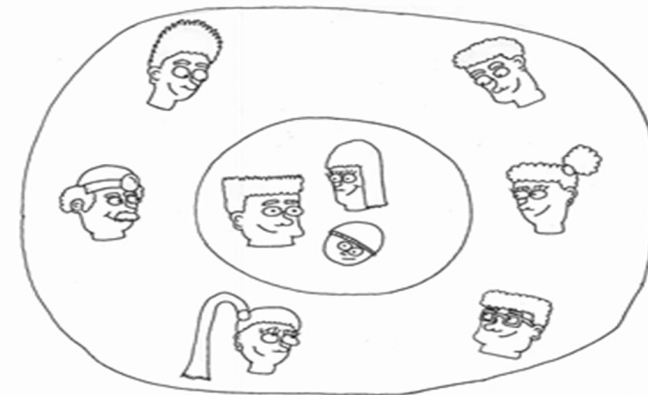
Consideration that if the young person's needs are not met appropriately in the community future admissions to a Tier 4 mental health hospital or 52 week specialist or unregulated placement may be considered.

Parents or Young People (depending on age) will be required to give consent for a referral to the Keyworker Team.

The Key Working Team currently support young people, their families, carers and guardians who meet the BLUE, RED or AMBER criteria on the Dynamic Support Register (DSR). The DSR criteria is a clinical tool used to support greater understanding of a young person's risk of admission to hospital ensuring that appropriate services and support are targeted to meet the needs of the young person and their family at a time when they need it the most .

Key-Working - Children and Young People Learning

Disability and Autism Programme



What does Key-Working mean?

The NHS Long Term Plan has made a very specific commitment to keyworkers for **some children and young people with a learning disability, autism or both**. The exact words are...

“By 2023/24 children and young people with a learning disability, autism or both with the most complex needs will have a designated keyworker, implementing the recommendation made by Dame Christine Lenehan. **Initially, keyworker support will be provided to children and young people who are inpatients or at risk of being admitted to hospital.** Keyworker support will also be extended to the most vulnerable children with a learning disability and/or autism, including those who face multiple vulnerabilities such as looked after and adopted children, and children and young people in transition between services.” (paragraph 3.33, Long Term Plan)

Translating the Words into Actions

- Work is led by the Children and Young Peoples Team in the Learning Disability and Autism Directorate, NHS England and Improvement headed by Sue North MBE
- Regional and national stakeholder events led by Council for Disabled Children, commissioned by Health Education England, to develop **Key Working Function- Workforce Competencies Framework**, and the **Key Working Function Guidance**
- Pilots are focussing on CYP at risk of admission or who are in hospital **"Initially, keyworker support will be provided to children and young people who are inpatients or at risk of being admitted to [mental health] hospital."**

Keyworker - Vision and mission

The mission is to facilitate the development and implementation of a Key-Working function at a local level by:

- Developing a cross-system function, with ability to build relationships and access resources from across the system;
- Ensuring an appropriate level of provision is in place and accessible to the children and young people who need it, when they need it;
- Embedding a support service to manage crises and support community living
- Improving the use of data from dynamic support registers to ensure timely identification of young people for support and to inform the commissioning of preventative services.

Families told us...

Children, young people and families should:

- Feel safe and happy
- Feel listened to and informed
- Feel involved in their plans, care and support
- Experience a reduction in stress and uncertainty and an increase in stability

Children, young people and families should have:

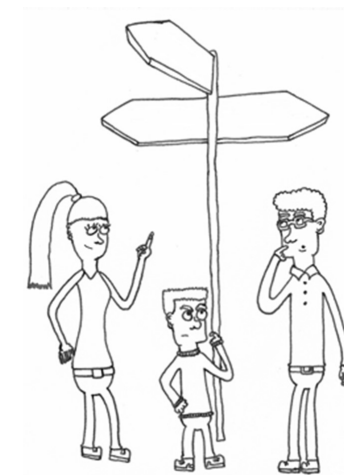
- Timely access to the right personalised, reasonably adjusted support
- Assessment, care and support which is integrated
- Continuity of care and support
- Well planned and well managed transitions
- Implementation of CETR recommendations
- Outcomes which are agreed with them

Key-Worker Team - Devon

The Keyworker Team can be contacted on:

Tel: - [01884 211660](tel:01884211660)

Email: - cfhd.ldapkeyworkerteam@nhs.net



Artwork by: "talented YP David Gill, part of our expert experience panel"