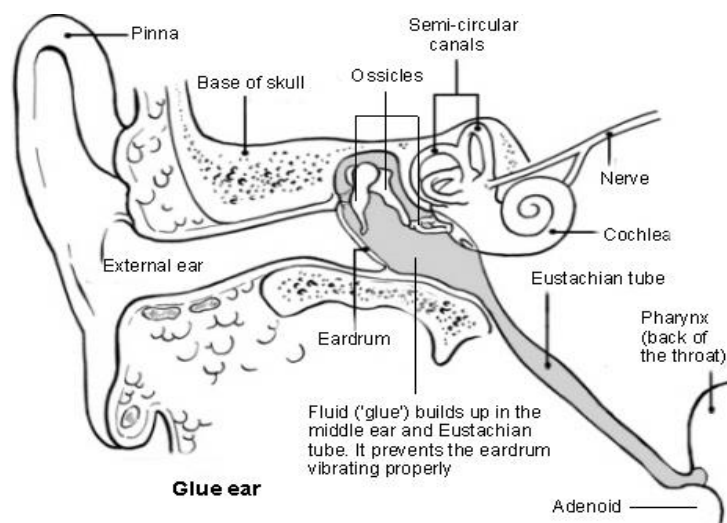


# Glue Ear – Conductive Hearing Loss



Many children suffer from conductive hearing loss.

This is often caused by a 'glue-like' fluid which collects in the middle ear (behind the eardrum) when a child has a heavy cold or catarrh.

Sounds may not be conducted to the inner ear and this problem is called a conductive hearing loss.

This hearing loss can fluctuate, changing from day to day. However, it can cause a habit of not listening very well and this might lead to frustrations and difficulties both for the child and parent/teacher.

Listening with a conductive hearing loss is like listening to the television with the sound turned too low, or trying to hold a conversation in a noisy room, or listening under water.



Hearing Support Service – Telephone 208248